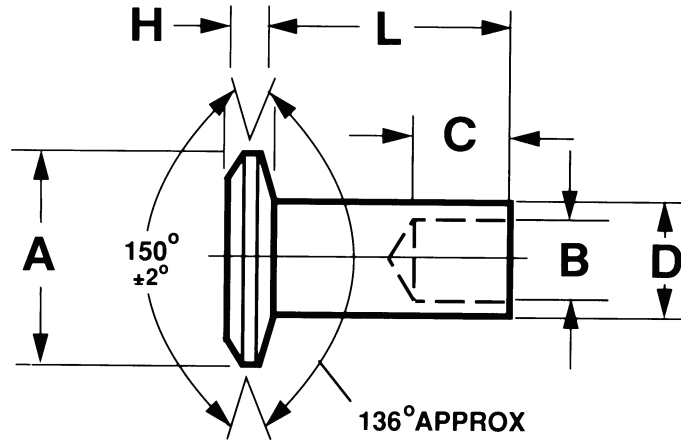




STANDARD BRAKE AND CLUTCH RIVETS



BRAKE LINING RIVETS

Nominal Shank Diameter	Nominal Head Diameter	Brake Rivet Number	D		A		H		B		C Hole Depth to Start of Apex.
			Shank Diameter		Head Diameter		Head Thickness		Hole Diameter		
			Min.	Max.	Min.	Max.	Min.	Max.	Min.	Max.	
9/64	19/64	BR 4-	0.141	0.146	0.289	0.303	0.035	0.045	.099	.105	0.141
9/64	23/64	BR 5-	0.141	0.146	0.351	0.367	0.041	0.051	.099	.105	0.141
3/16	23/64	BR 7-	0.182	0.188	0.351	0.367	0.041	0.051	.133	.139	0.188
3/16	15/32	BR 8-	0.182	0.188	0.458	0.478	0.053	0.067	.133	.139	0.188
.195/200	1/2	BR 20-	0.195	0.200	0.493	0.507	0.053	0.067	.135	.141	0.188
1/4	15/32	BR 10-	0.244	0.252	0.458	0.478	0.053	0.067	.173	.183	0.250

CLUTCH FACING RIVETS

Nominal Shank Diameter	Nominal Head Diameter	Brake Rivet Number	D		A		H		B		C Hole Depth to Start of Apex.
			Shank Diameter		Head Diameter		Head Thickness		Hole Diameter		
			Min.	Max.	Min.	Max.	Min.	Max.	Min.	Max.	
9/64	19/64	BR 3-	.141	.146	.289	.303	.035	.045	.099	.105	0.218
9/64	23/64	BR 5-	.141	.146	.351	.367	.041	.051	.099	.105	0.141
9/64	23/64	BR 16-	.141	.146	.351	.367	.041	.051	.099	.105	0.218
5/32	23/64	BR 11-	.151	.156	.351	.367	.041	.051	.107	.114	0.250
3/16	23/64	BR 17-	.182	.188	.351	.367	.041	.051	.133	.139	0.281

BRAKE LINING RIVETS

Nominal Shank Diameter	Nominal Head Diameter	Brake Rivet Number	D		A		H		B		C Hole Depth to Start of Apex.
			Shank Diameter		Head Diameter		Head Thickness		Hole Diameter		
			Min.	Max.	Min.	Max.	Min.	Max.	Min.	Max.	
9/64	19/64	BR 22-	.141	.146	.287	.307	.036	.044	.099	.105	0.140
3/16	23/64	BR 24-	.182	.188	.349	.369	.036	.044	.133	.139	0.187
.210	23/64	BR 23-	.208	.212	.349	.369	.036	.044	.165	.169	0.187

Above rivets available in brass and steel. After selecting the style and dimensions of the rivet required, a suffix must be added to the part number indicating the length of rivet in 16ths of an inch. Example: A brake-rivet 5/16th of an inch long would be BR4-5B, if the same part was steel the part number would be BR4-5S.