



RIVET NUTS: L-SERIES

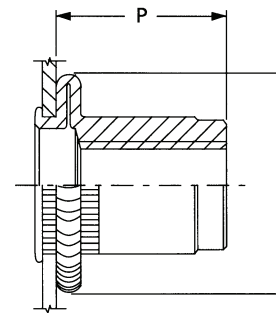
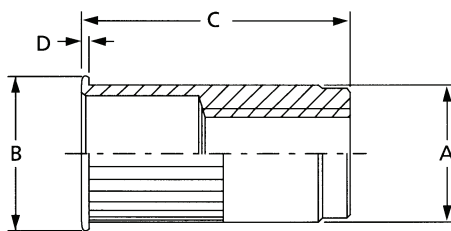
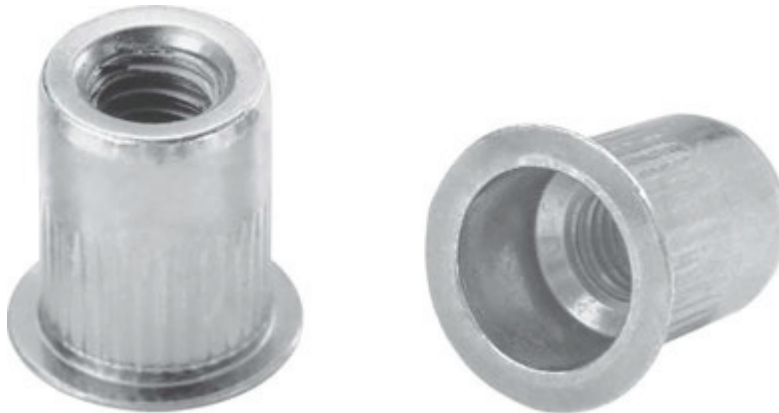
The ribbed L Rivet Nut Series features a large flange head configuration with a ribbed body.

RIBBED BODY

The ribbed body provides increased resistance from spinning.

LARGE HEAD

Provides a large bearing surface which increases push-out performance.





RIVET NUTS: L-SERIES

ALUMINUM - 5056 plain finish
 STEEL - C1008, yellow zinc (Bu)
 STAINLESS STEEL - 18-8

Thread Designation	Grip Range	Hole +.006 Dia. -.000	Steel Series	Aluminum Series	18-8 S/S Series	A Max.	B Nom.	C Max.	P Ref.	D Max.
#6-32 UNC	.020-.080	17/64 (.2656)	RN632080SLR	RN632080ALR	RN632080FLR	.265	.375	.460	.275	.032
#6-32 UNC	.080-.130	17/64 (.2656)	RN632130SLR	RN632130ALR	RN632130FLR	.265	.375	.510	.275	.032
#8-32 UNC	.020-.080	17/64 (.2656)	RN832080SLR	RN832080ALR	RN832080FLR	.265	.375	.460	.275	.032
#8-32 UNC	.080-.130	17/64 (.2656)	RN832130SLR	RN832130ALR	RN832130FLR	.265	.375	.510	.275	.032
#10-24 UNC	.020-.130	19/64 (.2969)	RN1024130SLR	RN1024130ALR	RN1024130FLR	.296	.400	.515	.300	.037
#10-24 UNC	.130-.225	19/64 (.2969)	RN1024225SLR	RN1024225ALR	RN1024225FLR	.296	.400	.625	.300	.037
#10-32 UNF	.020-.130	19/64 (.2969)	RN1032130SLR	RN1032130ALR	RN1032130FLR	.296	.400	.515	.300	.037
#10-32 UNF	.130-.225	19/64 (.2969)	RN1032225SLR	RN1032225ALR	RN1032225FLR	.296	.400	.625	.300	.037
1/4-20 UNC	.027-.165	25/64 (.3906)	RN2520165SLR	RN2520165ALR	RN2520165FLR	.390	.500	.620	.355	.037
1/4-20 UNC	.165-.260	25/64 (.3906)	RN2520260SLR	RN2520260ALR	RN2520260FLR	.390	.500	.720	.355	.037
1/4-28 UNF	.027-.165	25/64 (.3906)	RN2528165SLR	RN2528165ALR	RN2528165FLR	.390	.500	.620	.355	.037
1/4-28 UNF	.165-.260	25/64 (.3906)	RN2528260SLR	RN2528260ALR	RN2528260FLR	.390	.500	.720	.355	.037
5/16-18 UNC	.027-.150	17/32 (.5312)	RN5161815SLR	RN5161815ALR	RN5161815FLR	.530	.670	.735	.430	.042
5/16-18 UNC	.150-.312	17/32 (.5312)	RN5161831SLR	RN5161831ALR	RN5161831FLR	.530	.670	.850	.430	.042
5/16-24 UNF	.027-.150	17/32 (.5312)	RN5162415SLR	RN5162415ALR	RN5162415FLR	.530	.670	.735	.430	.042
5/16-24 UNF	.150-.312	17/32 (.5312)	RN5162431SLR	RN5162431ALR	RN5162431FLR	.530	.670	.850	.430	.042
3/8-16 UNC	.027-.150	17/32 (.5312)	RN3816150SLR	RN3816150ALR	RN3816150FLR	.530	.670	.735	.430	.042
3/8-16 UNC	.150-.312	17/32 (.5312)	RN3816312SLR	RN3816312ALR	RN3816312FLR	.530	.670	.850	.430	.042
3/8-24 UNF	.027-.150	17/32 (.5312)	RN3824150SLR	RN3824150ALR	RN3824150FLR	.530	.670	.735	.430	.042
3/8-24 UNF	.150-.312	17/32 (.5312)	RN3824312SLR	RN3824312ALR	RN3824312FLR	.530	.670	.850	.430	.042
1/2-13 UNC	.063-.200	11/16 (.6875)	RN5013200SLR	RN5013200ALR	RN5013200FLR	.685	.865	1.150	.850	.047
1/2-13 UNC	.200-.350	11/16 (.6875)	RN5013350SLR	RN5013350ALR	RN5013350FLR	.685	.865	1.300	.850	.047

ALUMINUM - 5056 plain finish
 STEEL - C1008, yellow zinc (Bu)
 STAINLESS STEEL - 18-8

Thread Designation	Grip Range	Hole +.152 Dia. -.000	Steel Series	Aluminum Series	18-8 S/S Series	A Max.	B Nom.	C Max.	P Ref.	D Max.
M4x0.7 ISO	.50-2.0	6.8	RN47020SLR	RN47020ALR	RN47020FLR	6.75	9.50	11.70	7.00	0.81
M4x0.7 ISO	2.00-3.30	6.8	RN47033SLR	RN47033ALR	RN47033FLR	6.75	9.50	13.00	7.00	0.81
M5x0.8 ISO	.50-3.3	7.6	RN58033SLR	RN58033ALR	RN58033FLR	7.55	10.10	13.10	7.60	0.94
M5x0.8 ISO	3.30-5.70	7.6	RN58057SLR	RN58057ALR	RN58057FLR	7.55	10.10	15.90	7.60	0.94
M6x1.0 ISO	.70-4.2	10.0	RN61042SLR	RN61042ALR	RN61042FLR	9.90	12.70	15.75	9.00	0.94
M6x1.0 ISO	4.2-6.6	10.0	RN61066SLR	RN61066ALR	RN61066FLR	9.90	12.70	18.30	9.00	0.94
M8x1.25 ISO	.70-3.8	13.5	RN812538SLR	RN812538ALR	RN812538FLR	13.45	17.00	18.65	18.80	1.02
M8x1.25 ISO	3.80-7.90	13.5	RN812579SLR	RN812579ALR	RN812579FLR	13.45	17.00	21.60	18.80	1.02
M10x1.5 ISO	.70-3.8	13.5	RN101538SLR	RN101538ALR	RN101538FLR	13.45	17.00	18.65	18.80	1.02
M10x1.5 ISO	3.80-7.90	13.5	RN101579SLR	RN101579ALR	RN101579FLR	13.45	17.00	21.60	18.80	1.02
M12x1.75 ISO	1.60-5.10	17.45	RN1217551SLR	RN1217551ALR	RN1217551FLR	17.4	21.97	29.21	21.59	1.19
M12x1.75 ISO	5.10-8.9	17.45	RN1217589SLR	RN1217589ALR	RN1217589FLR	17.4	21.97	33.02	21.59	1.19