



## RIVET NUTS: L-SERIES

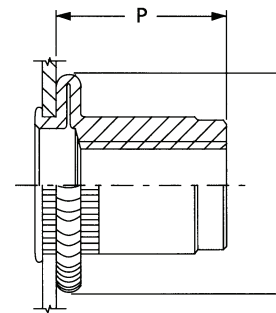
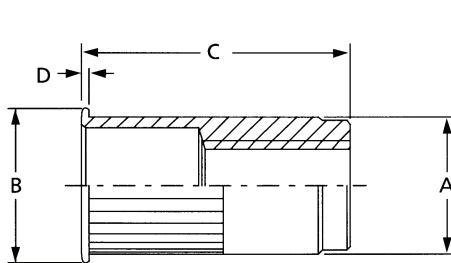
The ribbed L Rivet Nut Series features a large flange head configuration with a ribbed body.

### **RIBBED BODY**

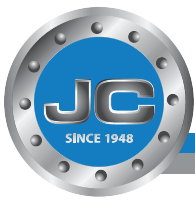
The ribbed body provides increased resistance from spinning.

### **LARGE HEAD**

Provides a large bearing surface which increases push-out performance.



Insert After Placing  
(Minimum Grip)



# RIVET NUTS: L-SERIES

ALUMINUM - 5056 plain finish  
 STEEL - C1008, yellow zinc (Bu)  
 STAINLESS STEEL - 18-8

Thread Designation	Grip Range	Hole +.006 Dia. -.000	Steel Series	Aluminum Series	18-8 S/S Series	A Max.	B Nom.	C Max.	P Ref.	D Max.
#6-32 UNC	.020-.080	17/64 (.2656)	RN632080SLR	RN632080ALR	RN632080FLR	.265	.375	.460	.275	.032
#6-32 UNC	.080-.130	17/64 (.2656)	RN632130SLR	RN632130ALR	RN632130FLR	.265	.375	.510	.275	.032
#8-32 UNC	.020-.080	17/64 (.2656)	RN832080SLR	RN832080ALR	RN832080FLR	.265	.375	.460	.275	.032
#8-32 UNC	.080-.130	17/64 (.2656)	RN832130SLR	RN832130ALR	RN832130FLR	.265	.375	.510	.275	.032
#10-24 UNC	.020-.130	19/64 (.2969)	RN1024130SLR	RN1024130ALR	RN1024130FLR	.296	.400	.515	.300	.037
#10-24 UNC	.130-.225	19/64 (.2969)	RN1024225SLR	RN1024225ALR	RN1024225FLR	.296	.400	.625	.300	.037
#10-32 UNF	.020-.130	19/64 (.2969)	RN1032130SLR	RN1032130ALR	RN1032130FLR	.296	.400	.515	.300	.037
#10-32 UNF	.130-.225	19/64 (.2969)	RN1032225SLR	RN1032225ALR	RN1032225FLR	.296	.400	.625	.300	.037
1/4-20 UNC	.027-.165	25/64 (.3906)	RN2520165SLR	RN2520165ALR	RN2520165FLR	.390	.500	.620	.355	.037
1/4-20 UNC	.165-.260	25/64 (.3906)	RN2520260SLR	RN2520260ALR	RN2520260FLR	.390	.500	.720	.355	.037
1/4-28 UNF	.027-.165	25/64 (.3906)	RN2528165SLR	RN2528165ALR	RN2528165FLR	.390	.500	.620	.355	.037
1/4-28 UNF	.165-.260	25/64 (.3906)	RN2528260SLR	RN2528260ALR	RN2528260FLR	.390	.500	.720	.355	.037
5/16-18 UNC	.027-.150	17/32 (.5312)	RN5161815SLR	RN5161815ALR	RN5161815FLR	.530	.670	.735	.430	.042
5/16-18 UNC	.150-.312	17/32 (.5312)	RN5161831SLR	RN5161831ALR	RN5161831FLR	.530	.670	.850	.430	.042
5/16-24 UNF	.027-.150	17/32 (.5312)	RN5162415SLR	RN5162415ALR	RN5162415FLR	.530	.670	.735	.430	.042
5/16-24 UNF	.150-.312	17/32 (.5312)	RN5162431SLR	RN5162431ALR	RN5162431FLR	.530	.670	.850	.430	.042
3/8-16 UNC	.027-.150	17/32 (.5312)	RN3816150SLR	RN3816150ALR	RN3816150FLR	.530	.670	.735	.430	.042
3/8-16 UNC	.150-.312	17/32 (.5312)	RN3816312SLR	RN3816312ALR	RN3816312FLR	.530	.670	.850	.430	.042
3/8-24 UNF	.027-.150	17/32 (.5312)	RN3824150SLR	RN3824150ALR	RN3824150FLR	.530	.670	.735	.430	.042
3/8-24 UNF	.150-.312	17/32 (.5312)	RN3824312SLR	RN3824312ALR	RN3824312FLR	.530	.670	.850	.430	.042
1/2-13 UNC	.063-.200	11/16 (.6875)	RN5013200SLR	RN5013200ALR	RN5013200FLR	.685	.865	1.150	.850	.047
1/2-13 UNC	.200-.350	11/16 (.6875)	RN5013350SLR	RN5013350ALR	RN5013350FLR	.685	.865	1.300	.850	.047

ALUMINUM - 5056 plain finish  
 STEEL - C1008, yellow zinc (Bu)  
 STAINLESS STEEL - 18-8

Thread Designation	Grip Range	Hole +.152 Dia. -.000	Steel Series	Aluminum Series	18-8 S/S Series	A Max.	B Nom.	C Max.	P Ref.	D Max.
M4x0.7 ISO	.50-2.0	6.8	RN47020SLR	RN47020ALR	RN47020FLR	6.75	9.50	11.70	7.00	0.81
M4x0.7 ISO	2.00-3.30	6.8	RN47033SLR	RN47033ALR	RN47033FLR	6.75	9.50	13.00	7.00	0.81
M5x0.8 ISO	.50-3.3	7.6	RN58033SLR	RN58033ALR	RN58033FLR	7.55	10.10	13.10	7.60	0.94
M5x0.8 ISO	3.30-5.70	7.6	RN58057SLR	RN58057ALR	RN58057FLR	7.55	10.10	15.90	7.60	0.94
M6x1.0 ISO	.70-4.2	10.0	RN61042SLR	RN61042ALR	RN61042FLR	9.90	12.70	15.75	9.00	0.94
M6x1.0 ISO	4.2-6.6	10.0	RN61066SLR	RN61066ALR	RN61066FLR	9.90	12.70	18.30	9.00	0.94
M8x1.25 ISO	.70-3.8	13.5	RN812538SLR	RN812538ALR	RN812538FLR	13.45	17.00	18.65	18.80	1.02
M8x1.25 ISO	3.80-7.90	13.5	RN812579SLR	RN812579ALR	RN812579FLR	13.45	17.00	21.60	18.80	1.02
M10x1.5 ISO	.70-3.8	13.5	RN101538SLR	RN101538ALR	RN101538FLR	13.45	17.00	18.65	18.80	1.02
M10x1.5 ISO	3.80-7.90	13.5	RN101579SLR	RN101579ALR	RN101579FLR	13.45	17.00	21.60	18.80	1.02
M12x1.75 ISO	1.60-5.10	17.45	RN1217551SLR	RN1217551ALR	RN1217551FLR	17.4	21.97	29.21	21.59	1.19
M12x1.75 ISO	5.10-8.9	17.45	RN1217589SLR	RN1217589ALR	RN1217589FLR	17.4	21.97	33.02	21.59	1.19



## RIVET NUTS: K-SERIES

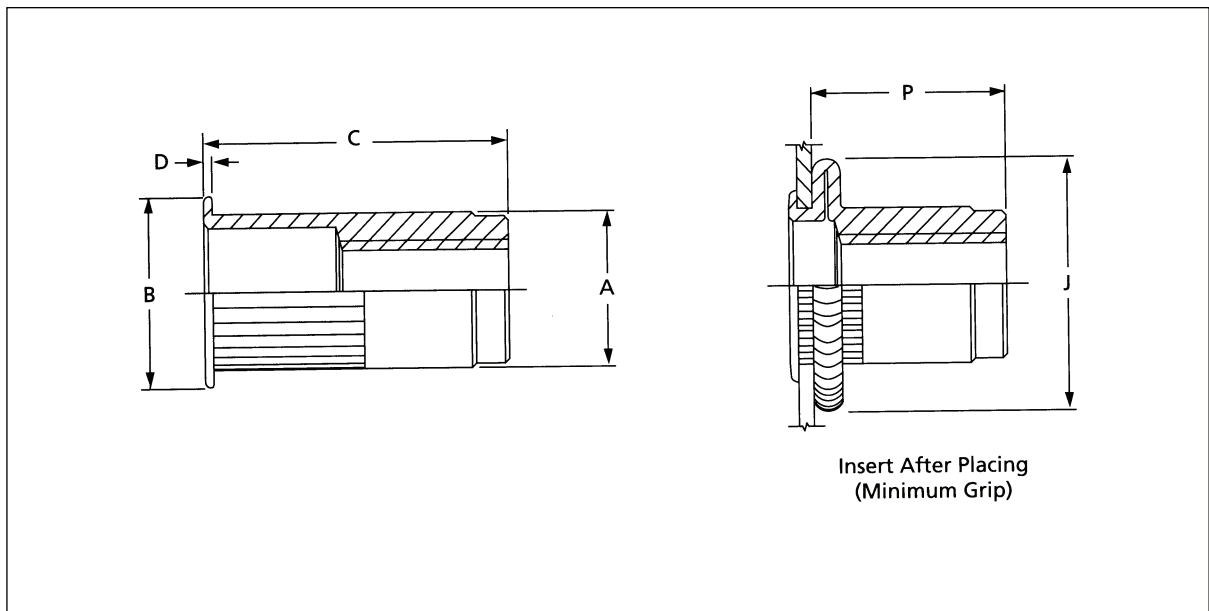
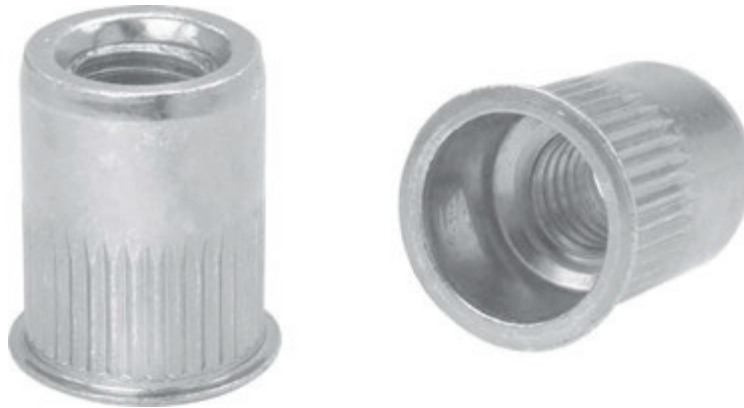
The ribbed K Rivet Nut Series features a reduced head configuration with a ribbed body.

### **RIBBED BODY**

The ribbed body provides increased resistance from spinning.

### **REDUCED HEAD**

Provides near flush head with the surface.





# RIVET NUTS: K-SERIES

ALUMINUM - 5056 plain finish  
 STEEL - C1008, yellow zinc (Bu)  
 STAINLESS STEEL - 18-8

Thread Designation	Grip Range	Hole +.006 Dia. -.000	Steel Series	Aluminum Series	18-8 S/S Series	A Max.	B Nom.	C Max.	P Ref.	D Max.	J Max.
#6-32 UNC	.020-.080	17/64 (.2656)	RN632080SKR	RN632080AKR	RN632080FKR	.265	.310	.450	.305	.019	.390
#6-32 UNC	.080-.130	17/64 (.2656)	RN632130SKR	RN632130AKR	RN632130FKR	.265	.310	.500	.305	.019	.390
#8-32 UNC	.020-.080	17/64 (.2656)	RN832080SKR	RN832080AKR	RN832080FKR	.265	.310	.450	.305	.019	.390
#8-32 UNC	.080-.130	17/64 (.2656)	RN832130SKR	RN832130AKR	RN832130FKR	.265	.310	.500	.305	.019	.390
#10-24 UNC	.020-.130	19/64 (.2969)	RN1024130SKR	RN1024130AKR	RN1024130FKR	.296	.340	.505	.315	.020	.450
#10-24 UNC	.130-.225	19/64 (.2969)	RN1024225SKR	RN1024225AKR	RN1024225FKR	.296	.340	.615	.315	.020	.450
#10-32 UNF	.020-.130	19/64 (.2969)	RN1032130SKR	RN1032130AKR	RN1032130FKR	.296	.340	.505	.315	.020	.450
#10-32 UNF	.130-.225	19/64 (.2969)	RN1032225SKR	RN1032225AKR	RN1032225FKR	.296	.340	.615	.315	.020	.450
1/4-20 UNC	.027-.165	25/64 (.3906)	RN2520165SKR	RN2520165AKR	RN2520165FKR	.390	.455	.610	.380	.021	.550
1/4-20 UNC	.165-.260	25/64 (.3906)	RN2520260SKR	RN2520260AKR	RN2520260FKR	.390	.455	.710	.380	.021	.550
1/4-28 UNF	.027-.165	25/64 (.3906)	RN2528165SKR	RN2528165AKR	RN2528165FKR	.390	.455	.610	.380	.021	.550
1/4-28 UNF	.165-.260	25/64 (.3906)	RN2528260SKR	RN2528260AKR	RN2528260FKR	.390	.455	.710	.380	.021	.550
5/16-18 UNC	.027-.150	17/32 (.5312)	RN5161815SKR	RN5161815AKR	RN5161815FKR	.530	.595	.720	.470	.023	.740
5/16-18 UNC	.150-.312	17/32 (.5312)	RN5161831SKR	RN5161831AKR	RN5161831FKR	.530	.595	.835	.470	.023	.740
5/16-24 UNF	.027-.150	17/32 (.5312)	RN5162415SKR	RN5162415AKR	RN5162415FKR	.530	.595	.720	.470	.023	.740
5/16-24 UNF	.150-.312	17/32 (.5312)	RN5162431SKR	RN5162431AKR	RN5162431FKR	.530	.595	.835	.470	.023	.740
3/8-16 UNC	.027-.150	17/32 (.5312)	RN3816150SKR	RN3816150AKR	RN3816150FKR	.530	.595	.720	.470	.023	.740
3/8-16 UNC	.150-.312	17/32 (.5312)	RN3816312SKR	RN3816312AKR	RN3816312FKR	.530	.595	.835	.470	.023	.740
3/8-24 UNF	.027-.150	17/32 (.5312)	RN3824150SKR	RN3824150AKR	RN3824150FKR	.530	.595	.720	.470	.023	.740
3/8-24 UNF	.150-.312	17/32 (.5312)	RN3824312SKR	RN3824312AKR	RN3824312FKR	.530	.595	.835	.470	.023	.740

ALUMINUM - 5056 plain finish  
 STEEL - C1008, yellow zinc (Bu)  
 STAINLESS STEEL - 18-8

Thread Designation	Grip Range	Hole +.152 Dia. -.000	Steel Series	Aluminum Series	18-8 S/S Series	A Max.	B Nom.	C Max.	P Ref.	D Max.	J Max.
M4x0.7 6H	.50-2.0	6.8	RN47020SKR	RN47020AKR	RN47020FKR	6.75	7.87	11.45	7.75	0.48	9.91
M4x0.7 6H	2.00-3.30	6.8	RN47033SKR	RN47033AKR	RN47033FKR	6.75	7.87	12.70	7.75	0.48	9.91
M5x0.8 6H	.50-3.3	7.6	RN58033SKR	RN58033AKR	RN58033FKR	7.75	8.64	12.85	8.00	0.51	11.43
M5x0.8 6H	3.30-5.70	7.6	RN58057SKR	RN58057AKR	RN58057FKR	7.75	8.64	15.65	8.00	0.51	11.43
M6x1.0 6H	.70-4.2	10.0	RN61042SKR	RN61042AKR	RN61042FKR	9.90	11.56	15.50	9.65	0.53	13.97
M6x1.0 6H	4.20-6.60	10.0	RN61066SKR	RN61066AKR	RN61066FKR	9.90	11.56	18.05	9.65	0.53	13.97
M8x1.25 6H	.70-3.8	13.5	RN812538SKR	RN812538AKR	RN812538FKR	13.45	15.11	18.30	11.94	0.58	18.80
M8x1.25 6H	3.80-7.90	13.5	RN812579SKR	RN812579AKR	RN812579FKR	13.45	15.11	21.20	11.94	0.58	18.80
M10x1.5 6H	.70-3.8	13.5	RN101538SKR	RN101538AKR	RN101538FKR	13.45	15.11	18.30	11.94	0.58	18.80
M10x1.5 6H	3.80-7.90	13.5	RN101579SKR	RN101579AKR	RN101579FKR	13.45	15.11	21.20	11.94	0.58	18.80

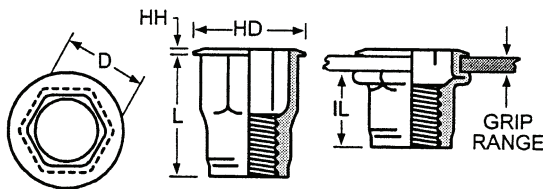


# HEX RIVET NUTS

The Hex rivet nut offers superior spin out resistance in hex holes. The part is **supplied in steel** but may be purchased in other materials though minimums may apply.

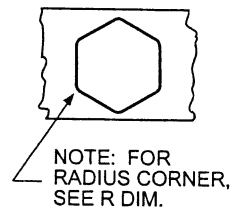


OPEN END TYPE



Thread Specifications: Unified 2B/21 per ASME B.1.1  
Metric 6H/21 per ASME B.1.13M

HOLE DETAIL



Part No.	Thread Size	Grip Range Out	Grip Call +.004-.000	Hole Size (Across Flats) +.025*	HD ±.010 +.003	HH ±.015	L Max.	D Max.	IL ±.015	R
RN632080SLX	6-32 UNC	.020-.080	080	.250	.375	.027	.385	.249	.295	.015
RN632130SLX	6-32 UNC	.080-.130	130	.250	.375	.027	.435	.249	.295	.015
RN832080SLX	8-32 UNC	.020-.080	080	.250	.375	.027	.385	.249	.295	.015
RN832130SLX	8-32 UNC	.080-.130	130	.250	.375	.027	.435	.249	.295	.015
RN1024130SLX	10-24 UNC	.020-.130	130	.281	.390	.027	.435	.280	.275	.020
RN1024225SLX	10-24 UNC	.130-.225	225	.281	.390	.027	.535	.280	.275	.020
RN1032130SLX	10-32 UNF	.020-.130	130	.281	.390	.027	.435	.280	.275	.020
RN1032225SLX	10-32 UNF	.130-.225	225	.281	.390	.027	.535	.280	.275	.020
RN2520165SLX	1/4-20 UNC	.027-.165	165	.375	.510	.030	.585	.374	.400	.040
RN2520260SLX	1/4-20 UNC	.165-.260	260	.375	.510	.030	.685	.374	.400	.040
RN2528165SLX	1/4-28 UNF	.027-.165	165	.375	.510*	.030	.685	.374	.400	.040
RN2528260SLX	1/4-28 UNF	.165-.260	260	.375	.510*	.030	.685	.374	.400	.040
RN5161815SLX	5/16-18 UNC	.027-.150	150	.500	.655*	.035	.685	.499	.530	.040
RN5161831SLX	5/16-18 UNC	.150-.312	312	.500	.655*	.035	.845	.499	.515	.040
RN3816150SLX	3/8-16 UNC	.027-150	150	.500	.655*	.035	.685	.499	.530	.040
RN3816312SLX	3/8-16 UNC	.150-312	312	.500	.655*	.035	.845	.499	.515	.040

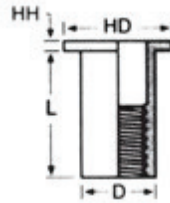
Part No.	Thread Size	Grip Range Out	Grip Call +.010-0.00	Hole Size (Across Flats) +.064*	HD ±.025 ±.008	HH ±.038	L Max.	D Max.	IL ±.038	R
RN47020SLX	M4 x 0.7 ISO	0.50-2.00	2.0	6.35	9.53	0.68	9.78	6.35	7.49	.38
RN47033SLX	M4 x 0.7 ISO	2.00-3.30	3.3	6.35	9.53	0.68	11.05	6.35	7.49	.38
RN58033SLX	M5 x 0.8 ISO	0.50-3.30	3.3	7.14	9.91	0.68	11.05	7.10	6.99	.50
RN58057SLX	M5 x 0.8 ISO	3.30-5.70	5.7	7.14	9.91	0.68	13.59	7.10	6.99	.50
RN61042SLX	M6 x 1.0 ISO	0.70-4.20	4.2	9.53	12.96	0.76	14.86	9.50	10.16	1.0
RN61066SLX	M6 x 1.0 ISO	4.20-6.60	6.6	9.53	12.96	0.76	17.40	9.50	10.16	1.0
RN812538SLX	M8 x 1.25 ISO	0.70-3.8	3.8	12.70	16.64*	0.89	17.40	12.70	13.46	1.0
RN812579SLX	M8 x 1.25 ISO	3.8-7.90	7.9	12.70	16.64*	0.89	21.46	12.70	13.08	1.0
RN101538SLX	M10 x 1.5 ISO	0.70-3.8	3.8	12.70	16.64*	0.89	17.40	12.70	13.46	1.0
RN101579SLX	M10 x 1.5 ISO	3.8-7.90	7.9	12.70	16.64*	0.89	21.46	12.70	13.08	1.0



# RIVET NUTS AND THREADED INSERTS

## Flat Head Rivet Nuts

The Flat Head rivet nut is designed for applications needing superior push out loads and features a large bearing surface.



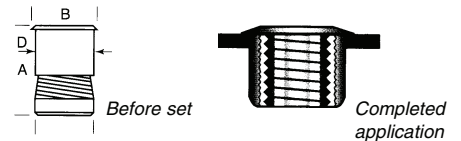
Steel Zinc Plated Rivet Nut (Flat Head) Specification

PART NUMBER STEEL	PART NUMBER ALUMINUM	THREAD SIZE	GRIP RANGE	D BODY DIA +.000/- .004	LENGTH L +/- .015	HD HEAD DIA +/- .015	HOLE SIZE
RN632075SF	RN632075AF	6-32 UNC	.010-0.075	0.189	0.438	0.325	.189
RV632120SF	RV632120AF	6-32 UNC	.075-0.120	0.189	0.500	0.325	.189
RN632160SF	RN632160AF	6-32 UNC	.120-0.160	0.189	0.500	0.325	.189
RN832075SF	RN832075AF	8-32 UNC	.010-0.075	0.221	0.438	0.357	.221
RN832120SF	RN832120AF	8-32 UNC	.075-0.120	0.221	0.500	0.357	.221
RN832160SF	RN832160AF	8-32 UNC	.120-0.160	0.221	0.500	0.357	.221
RN1024080SF	RN1024080AF	10-24 UNC	.010-0.080	0.250	0.531	0.406	.250
RN1024130SF	RN1024130AF	10-24 UNC	.080-0.130	0.250	0.594	0.406	.250
RN1024180SF	RN1024180AF	10-24 UNC	.130-0.180	0.250	0.641	0.406	.250
RN1032080SF	RN1032080AF	10-32 UNF	.010-0.080	0.250	0.531	0.406	.250
RN1032130SF	RN1032130AF	10-32 UNF	.080-0.130	0.250	0.594	0.406	.250
RN1032180SF	RN1032180AF	10-32 UNF	.130-0.180	0.250	0.641	0.406	.250
RN2520080SF	RN2520080AF	1/4-20 UNC	.010-0.080	0.332	0.625	0.475	.332
RN2520140SF	RN2520140AF	1/4-20 UNC	.080-0.140	0.332	0.687	0.475	.332
RN2520200SF	RN2520200AF	1/4-20 UNC	.140-0.200	0.332	0.750	0.475	.332
RN51618125SF	RN51618125AF	5/16-18 UNC	.030-0.125	0.413	0.750	0.665	.413
RN51618200SF	RN51618200AF	5/16-18 UNC	.125-0.200	0.413	0.875	0.665	.413
RN51618275SF	RN51618275AF	5/16-18 UNC	.200-0.275	0.413	0.937	0.665	.413
RN3816115SF	RN3816115AF	3/8-16 UNC	.030-0.115	0.490	0.844	0.781	.490
RN3816200SF	RN3816200AF	3/8-16 UNC	.115-0.125	0.490	0.938	0.781	.490
RN3816285SF	RN3816285AF	3/8-16 UNC	.125-0.200	0.490	1.031	0.781	.490

Specials available in stainless steel. Minimums may apply.

## Threaded Inserts

Thread-Serts are versatile threaded fasteners that can be used in a variety of applications. Use Thread-Serts in any thickness of metal or rigid material of at least 3/32" (.0937). Eliminate the need for tapping, welding and brazing. Thread-Sert design consists of an upper sleeve and a base which both have internal and external threads. During installation the base is drawn upwards inside the upper sleeve forcing a 360° contact between the sleeve and application material. No special preparation is needed; a drilled or punched hole is all that is required. Because of its unique setting ability, Thread-Serts can be used in almost any thickness of material. Installation is made easy with a variety of tools and kits.

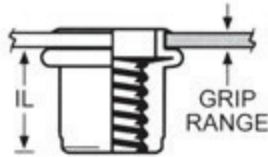
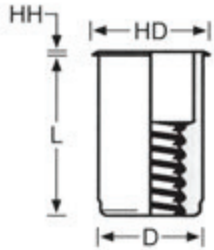


PART NUMBER ALUMINUM	PART NUMBER STEEL	THREAD SIZE	Material Thickness .0937-.1562		Material Thickness .0937-infinity		A* Body Length +/- .005"	B Head Dia. +/- .005"	D* Body Dia. +/- .002"
			HOLE SIZE	DRILL SIZE	HOLE SIZE	DRILL SIZE			
RN632ATS	RN632STS	6-32	.221	#2	.234	A	.375	.250	.215
RN832ATS	RN832STS	8-32	.250	1/4"	.261	G	.375	.282	.246
RN1024ATS	RN1024STS	10-24	.281	9/32"	.290	L	.375	.314	.277
RN1032ATS	RN1032STS	10-32	.281	9/32"	.290	L	.375	.314	.277
RN2520ATS	RN2520STS	1/4-20	.391	25/64"	.391	25/64"	.510	.408	.372
RN51618ATS	RN51618STS	5/16-18	.500	1/2"	.516	33/64"	.615	.537	.496
RN3816ATS	RN3816STS	3/8-16	.562	9/16"	.578	37/64"	.740	.600	.559



# COUNTERSUNK RIVET NUTS

Available in Steel-Zinc Plated or Aluminum



Thread Specifications: Unified 2B/21 per ASME B1.1  
Metric 6H/21 per ASME B1.13M



PART NUMBER STEEL	PART NUMBER ALUMINUM	P/N	GRIP RANGE	D BODY DIA MAX	L LENGTH +/- .015	HD HEAD DIA +/- .010
RN632080SC	RN632080AC	6-32 UNC	.020-0.080	0.249	0.385	0.295
RN832080SC	RN832080AC	8-32UNC	.020-0.080	0.249	0.385	0.295
RN1024130SC	RN1024130AC	10-24 UNC	.020-0.130	0.280	0.440	0.320
RN1032130SC	RN1032130AC	10-32 UNF	.020-0.130	0.280	0.440	0.320
RN2520165SC	RN2520165AC	1/4-20 UNC	.030-0.165	0.374	0.580	0.425
RN51618200SC	RN51618200AC	5/16-18 UNC	.030-.200	0.499	0.690	0.560
RN3816200SC	RN3816200AC	3/8-16 UNC	.030-.200	0.499	0.690	0.560

PART NUMBER STEEL	PART NUMBER ALUMINUM	P/N	GRIP RANGE	D BODY DIA MAX	L LENGTH +/- .38	HD HEAD DIA +/- .25
RN47020SC	RN47020AC	M4 X 0.7 ISO	.50-2.0	6.32	9.78	7.49
RN58033SC	RN58033AC	M5 X 0.8 ISO	.50-3.3	7.11	11.18	8.13
RN61042SC	RN61042AC	M6 X 1.0 ISO	.76-4.2	9.50	14.73	10.80
RN812551SC	RN812551AC	M8 X 1.25 ISO	1.02-5.1	12.67	17.53	14.22
RN101551SC	RN101551AC	M10 X 1.5 ISO	1.02-5.1	12.67	17.53	14.22

Specials available in stainless steel. Minimums may apply.